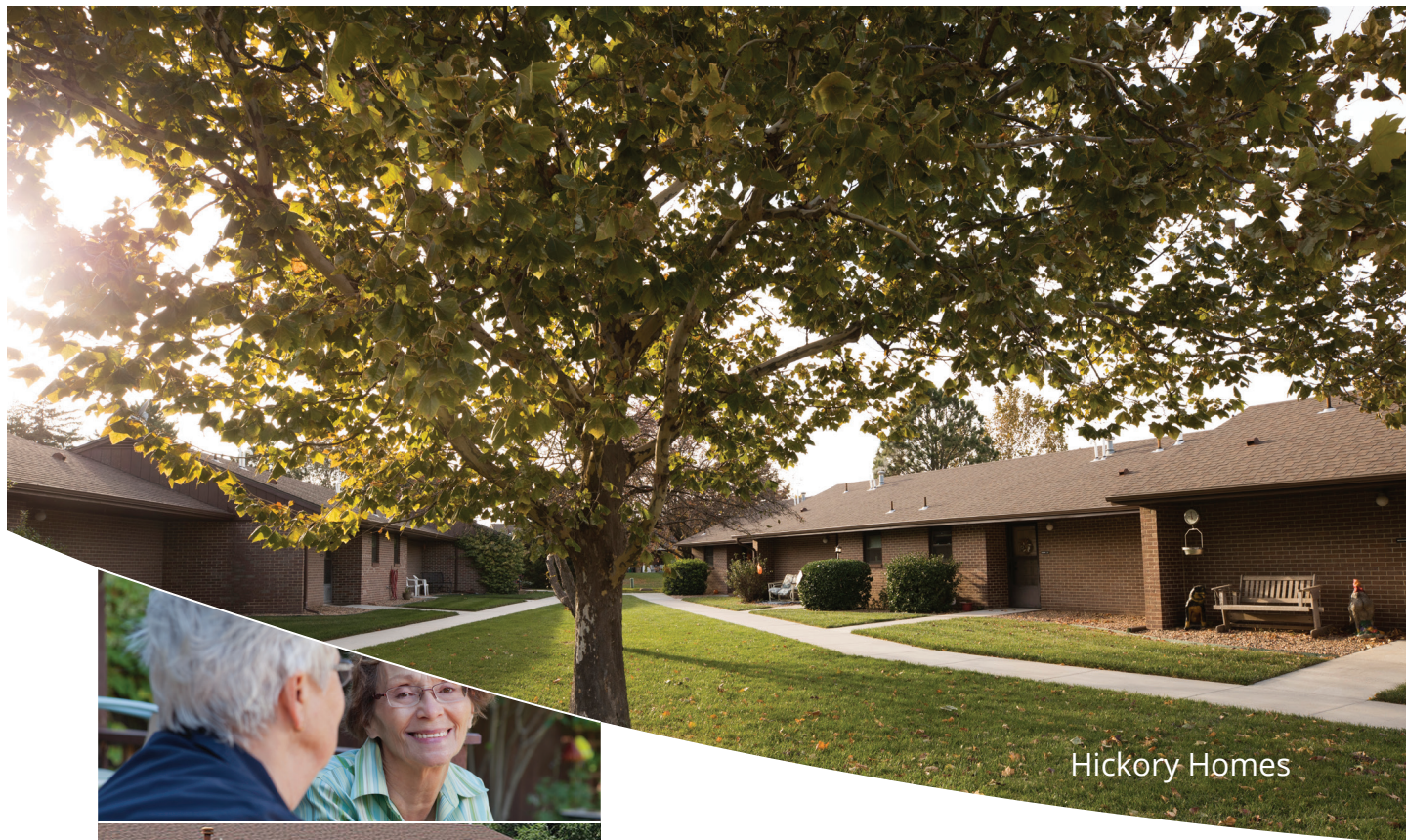


Be part of a community

Welcome to Bluestem Communities, where relationships, community and living in a way that brings you the most joy are our priorities. Bluestem Communities is a non-profit life plan community focused on promoting living well in all life stages through multiple locations, living settings and a variety of services and amenities. Subsidized housing options at Bluestem include Hickory Homes at the Schowalter Villa campus in Hesston and Kidron Inc. at the Kidron Bethel Village campus in Newton. Each community is a short drive from Wichita, has easy access to excellent medical professionals, diverse restaurants and other community amenities to suit your needs and interests, and the peaceful comfort of small-town living.

SUBSIDIZED HOUSING QUALIFICATIONS

- Meet the income criteria
- 62 years of age or older or
- Qualified individual with a disability



Hickory Homes



Kidron, Inc.



Subsidized Housing Opportunities at Bluestem Communities

HICKORY HOMES
Hesston, KS
and
KIDRON, INC.
North Newton, KS

Contact

Nichole Willis
nicholew@bluestemks.org
620-327-3790

bluestemks.org



Hickory Homes

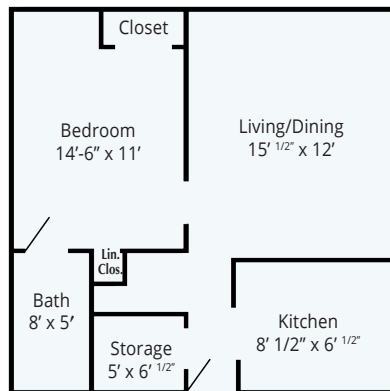
175 W. Hickory • Hesston, KS 67062
Phone: 620-327-3790 • Fax: 620-327-3793

Hickory Homes is located next to the Dyck Arboretum of the Plains, a 13-acre botanical garden with a walking path, and residents can enjoy activities with children at the neighboring Hesston Childcare Center.

There are two one-bedroom apartment floor plans at Hickory Homes, and five units are adapted with special features for accessibility.

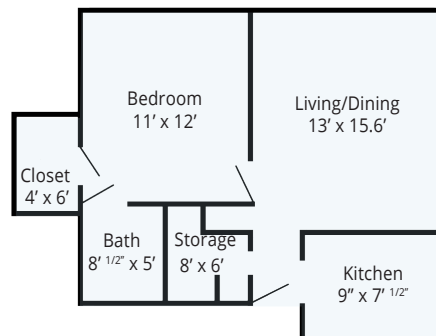
► MAIN BUILDING FLOOR PLAN

24" x 24', 596 square feet



► 4-PLEX FLOOR PLAN

24" x 22', 576 square feet



HICKORY HOMES & KIDRON INC. HOUSING OFFERS

- Private apartments
- Coin-operated laundry facilities
- Opportunities to participate in campus community activities
- A smoke-free campus
- Small pets allowed
- Library with internet access
- Transition support program
- Membership to Bluestem Wellness Centers in Hesston and North Newton (may include a small monthly fee)
- Volunteer opportunities
- Easy access to campus dining options
- Gardening opportunities
- Enrichment opportunities through Hesston College and Bethel College



bluestemks.org

Kidron, Inc.

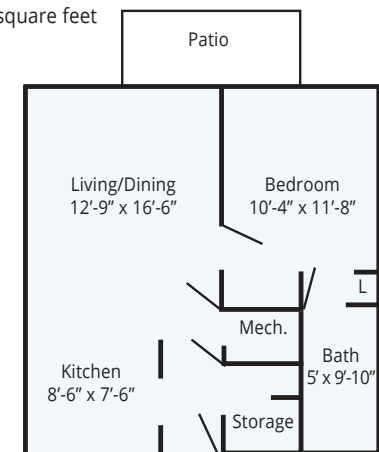
500 W. Bluestem St. • North Newton, KS 67117
Phone: 316-836-4859 • Fax: 316-284-0173

Kidron Inc. is near the Sand Creek Trail, which offers three miles of beautiful walking and biking opportunities, and connects the Kidron Bethel Village campus, Bethel College and the town of North Newton.

There are two one-bedroom apartment floor plans at Kidron Inc. There are two two-bedroom apartments and three units are adapted with special features for accessibility.

► MAIN BUILDING FLOOR PLAN

614 square feet



► 4-PLEX FLOOR PLAN

586 square feet

