



Lakeside Inclusive

BLUESTEM
COMMUNITIES

SCHOWALTER VILLA
Hesston, KS
888-388-7445

Welcome to your new home

Welcome to Bluestem Communities and the Schowalter Villa campus, where relationships, community and living in a way that brings you the most joy are our priorities. Bluestem Communities is a non-profit life plan community focused on promoting living well in all life stages through multiple locations, living settings and a variety of services and amenities. Schowalter Villa offers several independent living neighborhoods, including Lakeside Inclusive, as well as assisted living and health care services. You'll find living here to be convenient and serene, providing you with greater peace of mind.



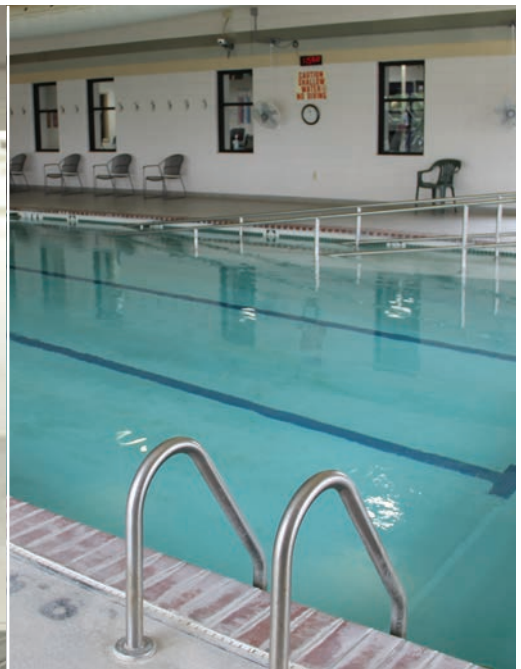


“Lakeside Inclusive is so comfortable. My kids and I are delighted I made the move.”

Ellen, Bluestem Communities Resident

Living at Lakeside Inclusive

Lakeside Inclusive offers the freedom and privacy of independent retirement living with enriched amenities and services to make your life as convenient and comfortable as possible. These wellness-focused bonuses are designed to extend and enhance your independent lifestyle and allow you to focus your time and energy on the activities of your choice. Here you receive personalized hospitality and service.



The following services and amenities listed are included with living at Lakeside Inclusive. Most of them are under the same roof as your home so you don't have to worry about driving or going out in inclement weather.

HEALTH AND WELLNESS

- Access to Bluestem Wellness Centers, programming, and 87° lap pool and hot tub.
- Personal Emergency Response button.
- Home health nurse wellness visit every 60 days.
- On-call home health nurse.

SERVICE AND CARE COORDINATION

- Lakeside Inclusive team at your service on weekdays.
- Concierge-level support for “the little things”.
- Medical care consultation for individuals self-managing health issues, medications and life changes.
- Recommendations and coordination of additional services as needs change.

MEAL PROGRAM

- Dining program covers one to two prepared meals per day from any Bluestem dining location.
- Access to in-building Water's Edge restaurant, which features homemade favorites for convenient dine-in, delivery or carry out service.

HOUSEKEEPING

- Housekeeping services provided every other week.
- Weekly trash and recycling pick-up from your door.

TRANSPORTATION

- Scheduled errand trips.
- Rides to events and volunteer opportunities at the Villa Life Center.
- Private transportation to appointments available for an additional charge.

MAINTENANCE-FREE LIVING

- Routine preventative home maintenance plan with repair and replacement work as needed, including maintenance or replacement as necessary for appliances, plumbing, heating and air conditioning.
- Property structure insurance
- Snow removal
- Above-standard street, sidewalk and lake lighting to accommodate your active lifestyle through the seasons.
- Home oversight when you are away for extended periods.
- Access to a garden plot and garden tool storage.

SOCIAL AND EDUCATIONAL OPPORTUNITIES

- Campus events, activities and volunteer opportunities.
- In-building woodworking shop, creative arts and pottery studio.

UTILITIES

- Wireless internet
- Cable television package
- Landline phone service
- Electricity
- Water
- Sewer and refuse



Lakeside Inclusive optional a la carte services

Lakeside Inclusive offers additional services that can be customized to fit your lifestyle and needs.

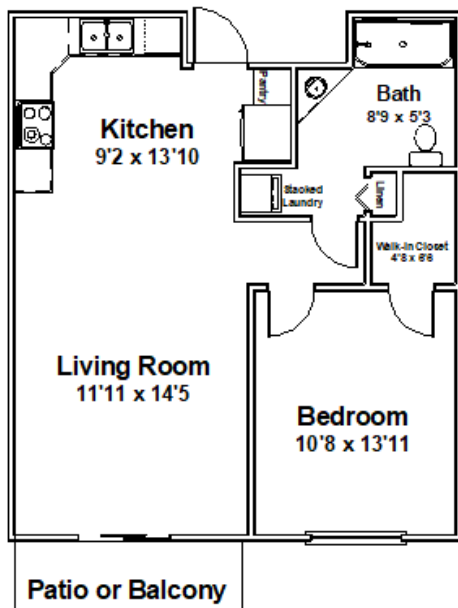
- Increased nurse visits
- Weekday staff check-ins
- Companion services
- Home care aide visits
- Support with medication management
- Private transportation
- Therapies: physical, occupational and speech
- Enhanced housekeeping
- Handyman maintenance services



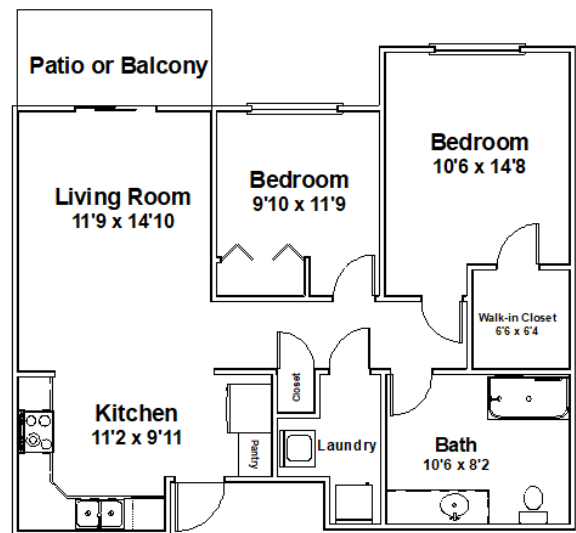
Home features

Each Lakeside Inclusive apartment home features:

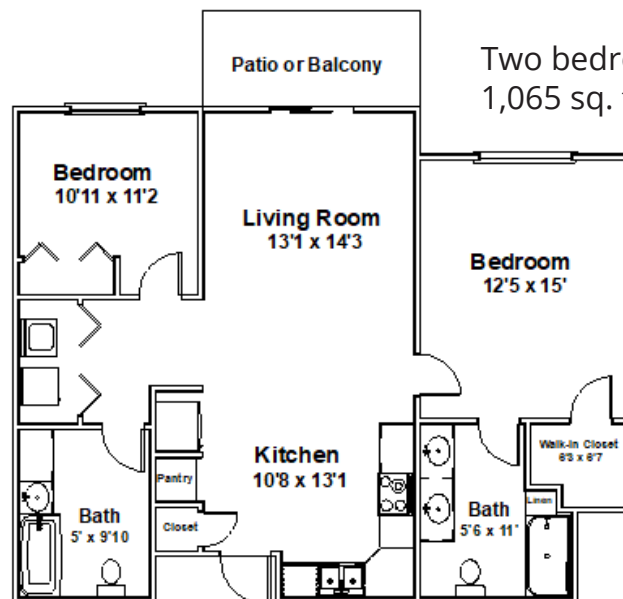
- Spacious, open floor design
- Full kitchen with full-size appliances
- In-home full-size laundry appliances
- Large walk-in closet
- Spacious bathrooms with step-in showers
- Outdoor patio or balcony space on most suites
- Wheelchair accessibility
- Wide doorways
- Electric outlets 18" from the floor
- Excellent lighting
- Additional storage area
- Single or double garages (available for an additional charge)



One bedroom | one bathroom
650 sq. ft.



Two bedroom | one bathroom
923 sq. ft.



Two bedroom | two bathroom
1,065 sq. ft.

Lakeside Village in-building amenities

- Water's Edge Restaurant & Catering – a full-service public restaurant featuring an eclectic menu of home-cooked favorites as well as ethnic dishes.
- Bluestem Wellness Center – Hesston, including fitness center, pool and hot tub, land and water aerobics, indoor walking path.
- Physical, occupational and speech therapy services.
- Library
- Creative arts studio
- Woodworking studio
- Pool table
- Indoor mail delivery
- Beauty salon
- Outdoor patio
- Gathering spaces available for private reservation.
- Guest rooms to rent for overnight visitors.
- Elevator access to all floors.



Schowalter Villa on-campus amenities

- Lakes, gazebos, recreation spaces and well-maintained sidewalks for outdoor walking.
- Fishing privileges in private, stocked lakes.
- Social activities
- Community and campus enrichment and lifelong learning opportunities with Hesston College and Bethel College.
- Chaplain services
- Private reservation of common areas for your events and gatherings.
- Hesston Bakery and Cafe at Mullet Place.

CHOICE RICH COMMUNITY

Schowalter Villa is a life plan community offering personalized levels of care, including award-winning assisted living at Mullet Place and health care at the Villa Life Center. A unique feature of Schowalter Villa is that it is a multi-generational campus that also houses the Hesston Intergenerational Childcare Center and is located next door to Hesston College.



Schowalter Villa Campus | Hesston, Kansas





Welcome to Hesston

Hesston, Kansas, population 3,800, epitomizes a Midwestern town with its comfortable and friendly small-town atmosphere. Located just 10 minutes from Newton and 30 minutes from Wichita, a variety of life, experiences and conveniences are all nearby.

COMMUNITY ATTRACTIONS:

- Dyck Arboretum of the Plains
- Hesston College events and activities
- Four-star 18-hole public golf course
- Sidewalk and trail system connecting all parts of Hesston community
- City-wide unconventional vehicle permits (golf-cart access on city streets)
- Variety of restaurants
- Close proximity to medical services and specialists
- Peaceful comfort of small-town living
- Award-winning public library and programming
- 9 city parks including pickle ball, archery range, shelter reservation and variety of outdoor activities for all ages
- Hesston Aquatic Center
- King Park splash pad





Live well here!

Enjoy this chapter of your life in comfort and focus on the things that are most important to you! We can't wait to welcome you home!



SCHOWALTER VILLA
Hesston, KS
888-388-7445

Call today for more information!

bluestemks.org

